

developers **md** infrastructure

Contact : 93288 99884, 93760 11559  
 Site address : City pulse multiplex road,  
 Nr. Pramukh Bungalows,  
 Radhesan, Gandhinagar.

design **pathway design**  
 Vijay Shah  
 Naranpura, Ahmedabad.

FINELINE PROGRESS

# Maruti Magnum

Maruti Magnum is a premium apartment project with state of the art amenities, Living at Maruti Magnum will ensure that all the residents have a truly international lifestyle with the best quality of life compared to occupants of conventional apartments. Maruti Magnum is an ideal choice for people looking to live in a clean and pollution free neighborhood.

The project is located at a short distance from Gandhinagar Infocity. Other key sites that are very near to the project are Akshardham temple, Citypulse multiplex cinema and the newly developed Gift City.

The facility of separate commercial shopping is also available at this site.

And it is only 15 minutes drive from the airport.

The project is being constructed by MD Infrastructure, a company with an excellent reputation for maintaining high standards and delivering quality housing at affordable pricing.





shops

40.00 MT. WIDE T.P. ROAD

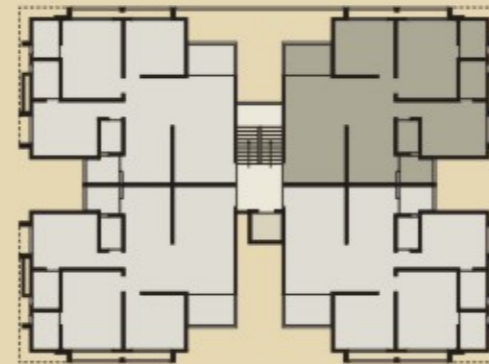
N  Ground Floor



a tribute to good living



typical floor



3 bhk apartments

unit plan



**STRUCTURE**

Earthquake resistant structure of R.C.C. frame work with Brick masonry wall.

**WALL FINISH**

Internal smooth finish plaster with wall putty, External double coat sand faced plaster with 100% acrylic water proof paint.

**FLOORING**

Vitrified tiles flooring in all rooms.

**DOORS & WINDOWS**

Decorative main door with wooden frame and all other doors are flush door. All windows are made of powder coated aluminum.

**KITCHEN**

Granite platform with S.S. sink, coloured glazed tiles dedo up to lintel level.

**TOILETS**

Good quality concealed plumbing & fittings and coloured glazed tiles dedo up to lintel level.

**ELECTRIFICATION**

Concealed copper wiring with adequate points as per architect design.

**TERRACE**

China mosaic on terrace for heat - reduction and longer life of building

features

**amenities**

- Attractive Entrance Gate and Foyer.
- Smooth running lift of reputed company for easy conveyance.
- Fully paved sufficient parking area.
- 24 hour water supply by common bore well facility.
- 24 hour security services with Intercom facility.
- A well developed landscaped common garden space with children park.
- All internal road R.C.C. with stone paver & street light.



**Notes**

- Only internal changes shall be allowed prior permission and shall be charged.
- G.E.B. charges, legal charges, GUDA Charges shall be born by the members.
- Maintenance deposit for common facilities shall be paid at the time of possession.
- Stamp duty, registration fees & service tax shall be born by purchaser.
- Irregular payments shall cause can cancellation of booking.
- This brochure is just for on easy presentation for the project and should not be treated as a legal document.

